

# 5. Outboard Basin Floor Fan ("Venus") Play

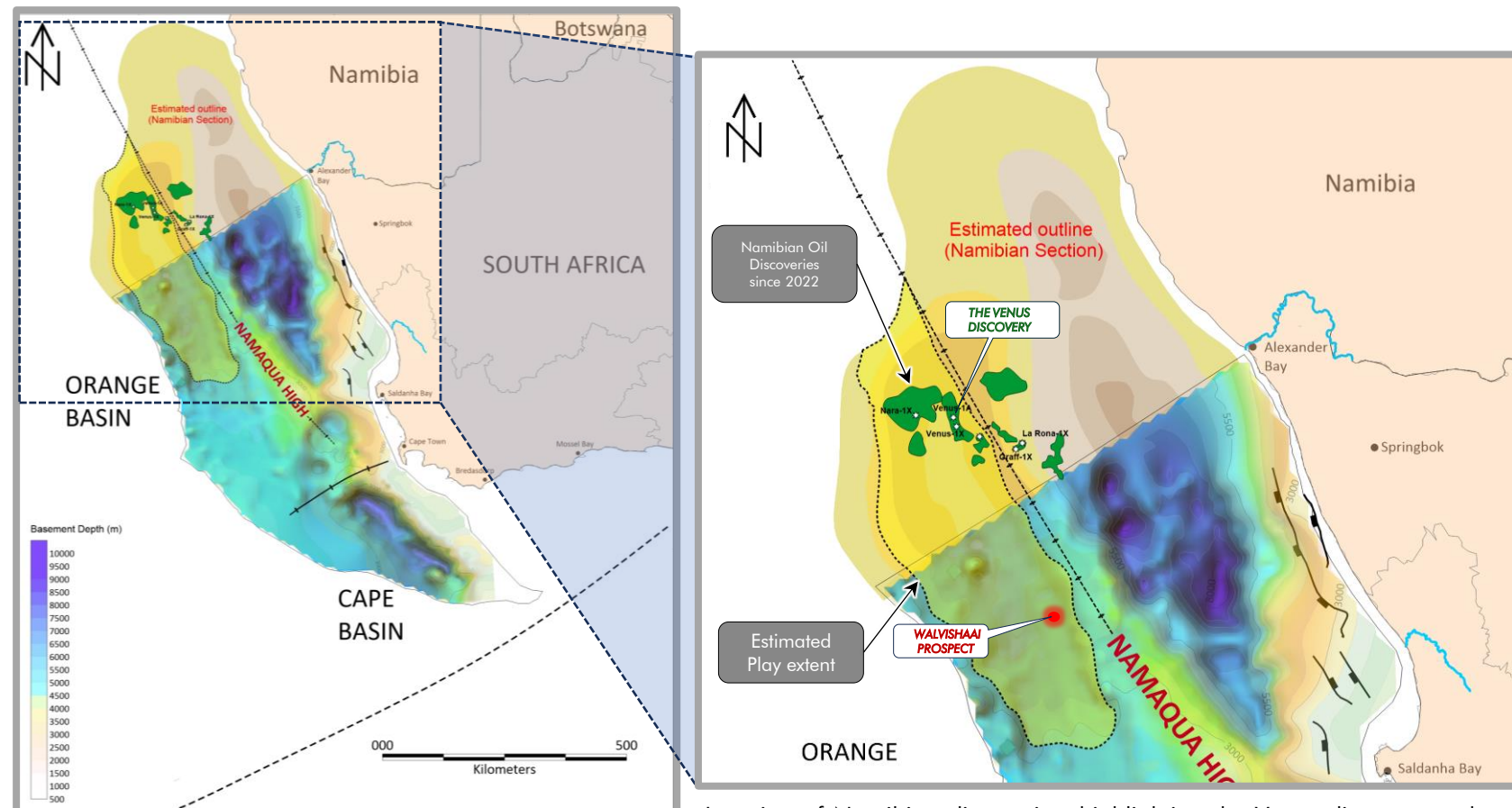
## Overview:

The outboard basin floor fan (BFF) Play is demonstrated by the Venus discovery offshore Namibia. It is a deepwater basin floor fan reservoir charged from a mature Aptian restricted marine source rock deposited in the western depocenter of the Northern Orange Basin. It was deposited on partially transitional-oceanic crust west of the Namaqua High.

The Namaqua High probably created restricted marine conditions during the Aptian which allowed the deposition of marine shales within anoxic conditions. Seismic data strongly suggest that the outboard play extends relatively far south into the South African portion of the Orange Basin. The western depocenter, as with the case of the Venus prospect, exhibits a counter-regional aspect towards the west and a sediment wedge pinching out onto the Namaqua High to the east. The trap was formed due to the differential loading of overlying mass-transport deposits (Impact oil and gas). Seismic data also suggest that the Venus source extends southwards although its distribution and extent is unknown at present. If present towards the south, it would likely charge similar pinch-out basin floor fans and other turbidite and mixed depositional systems at higher stratigraphic levels.

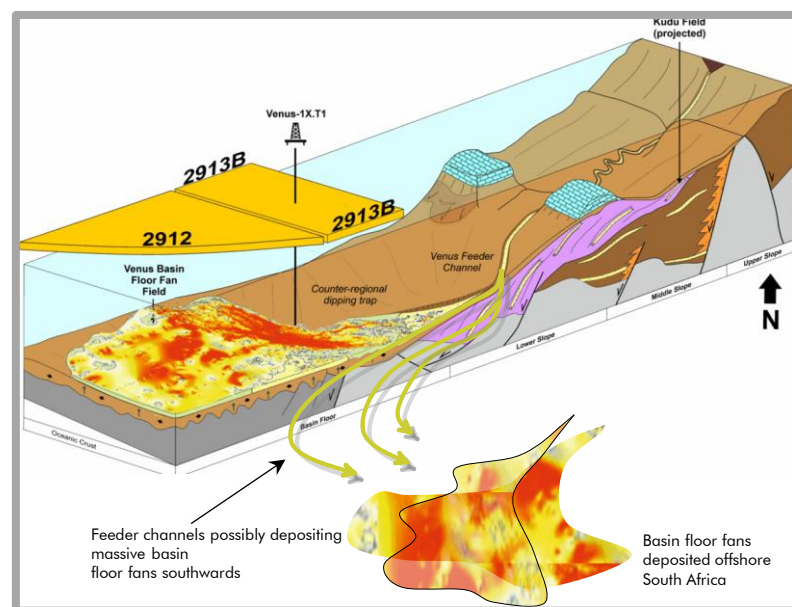
## Exploration Opportunities

The Walvishaai prospect is situated south of Venus within the South African portion of the basin. It also sits within the same structural domain (west of the Namaqua high) as the Venus Super fan as well as in similar water depths and sediment overburden. Although mapped on relatively sparse 2D seismic data the mapped size of this prospect is relatively larger than what has been reported for Venus.

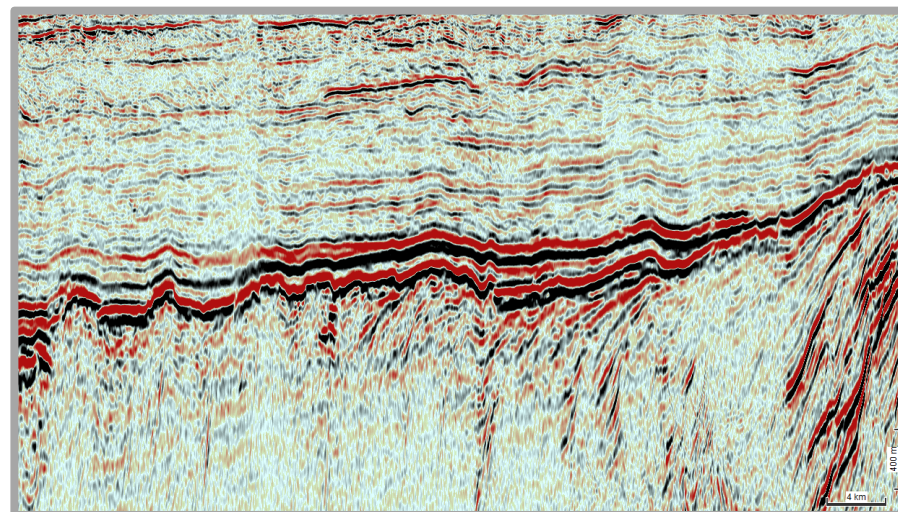


Map showing location of 2D seismic line below

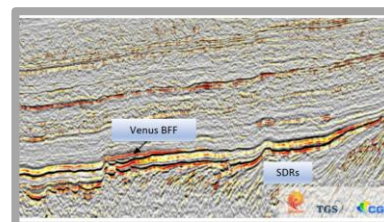
Location of Namibian discoveries, highlighting the Venus discovery and a South African analogue, the Walvishaai Prospect and possible extent of the Outboard Play



Modified from Impact Oil and Gas  
<https://impactoilandgas.com/assets/namibia-2912-2913b/>



**THE WALVISHAAI PROSPECT**  
 Salomo et al., 2022



**THE VENUS DISCOVERY**

